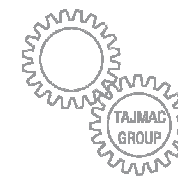


VERTICAL MACHINING CENTRE

MCV 1800MULTI



- ▶ Multipurpose 5-axis solution
- ▶ Fork head B - axis
- ▶ Torque motor driven rotary table C - axis
- ▶ Highly productive machine
- ▶ High dynamic and thermal stability
- ▶ High accuracy at machining
- ▶ Linear guideways in all axes
- ▶ Direct measuring in all axes
- ▶ Easy loading of large workpieces
- ▶ Utilization of HSC technology
- ▶ Full enclosure of work zone

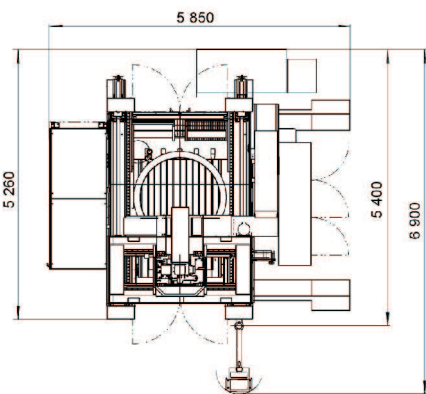
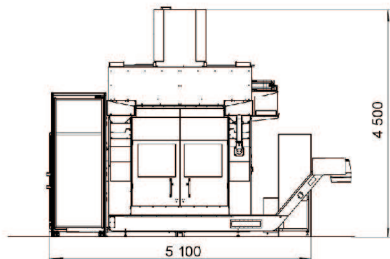


STANDARD EQUIPMENT

Fork head B - axis
 Tork motor driven rotary table C - axis
 Automatic tool changer with 40 positions
 Laser tool probe
 Workpiece measuring probe + 5 axis machining package
 Digital drives SIEMENS
 HEIDENHAIN direct linear measuring
 Spindle thermal stabilization
 Tool holder automatic air blasting
 Tool outer cooling
 Completely covered working space
 Chip conveyor with integrated coolant tank
 Working cycle end signalling

OPTIONAL EQUIPMENT

Coolant through spindle axis
 Tool cooling with min. quantity of lubricant
 Turning solution package
 Bigger capacity automatic tool changer 60 posit.
 Hand-operated washing-off gun
 Rotary glass wiper
 Vapour exhausting from work space
 Collector of oil from coolant surface
 Extension of side walls - 150 or 300 mm



Working Travels

X-axis - cross rail	2 300 mm
Y-axis - cross saddle	1 200 mm
Z-axis - ram	800 mm
B-axis - fork head	+/- 110 °
C-axis - rotary table	360 °

Feedrates

Working feeds in X, Y, Z	30 m/min
Rapid traverse in X, Y, Z	30 m/min
Max. acceleration in X, Y, Z	3 m/s ²
Feed in B-axis - fork head	10 m/min
Feed in C-axis - rotary table	40 m/min

Distances

Spindle face to rotary table for HSK-A63	+55 + 855 mm
Spindle face to rotary table for HSK-A100	-15 + 785 mm
Table surface to floor	905 mm

Spindle

	HSK-A63
Speed ratio	1 - 18 000 rpm
Transmission type	electrospindle
Power (S1)	21 kW
Power (S6 - 40%)	27 kW
Torque (S1)	100 Nm
Clamping torque for turning operations	NO

Automatic Tool Changer

Number of ATC	1
Number of tool pockets in ATC	40
Tool exchange time (tool to tool)	15 s
Tool max. diameter	100 mm
Tool max. length	300 mm
Tool max. weight	6.5 kg
Total maximum tool weight of all tools	250 kg

Accuracy (VDI/DGQ 3441)

Measuring system	direct
Positioning in X, Y, Z axes	0.01 mm
Repeatability in X, Y, Z axes	0.006 mm
Positioning in B axe	5.4 arc.sec
Positioning in C axe	5 arc.sec

Work Table

Table size	φ 1 800 mm
Max. table load	5 000 kg
Max. dimensions of workpiece-length of tool 300 mm	φ 1 800 x 350 mm
Max. dimensions of workpiece with extended side walls	φ 1 800 x 550 mm

Pneumatic Unit

Air pressure at inlet	0.6 - 0.8 MPa
Air consumption (approximately)	6 m ³ /hod
Operational pressure	0.55 MPa

Energy Supplies

Mains voltage rating	3 x 400 V / 50-60 Hz
Operational power input	64 kWA
Full load current	125 A

Shipping Dimensions of Machine

Length	4 056 mm
Width	3 120 mm
Height with dismantled bracket of Z-axis	3 323 mm

Complementary Data

Machine floor space L x W	5 850 x 5 260 mm
Machine max. working height	4 550 mm
Control system	SINUMERIK 840 D, HEINDEHAIN iTNC 530

Spindle

	HSK-A63	HSK-A100
Speed ratio	1 - 18 000 rpm	1 - 12 000 rpm
Transmission type	electrospindle	electrospindle
Power (S1)	21 kW	27 kW
Power (S6 - 40%)	27 kW	31 kW
Torque (S1)	100 Nm	130 Nm
Clamping torque for turning operations	NO	900 Nm

Automatic Tool Changer

Number of ATC	1
Number of tool pockets in ATC	40
Tool exchange time (tool to tool)	15 s
Tool max. diameter	100 mm
Tool max. length	300 mm
Tool max. weight	6.5 kg
Total maximum tool weight of all tools	250 kg

Accuracy (VDI/DGQ 3441)

Measuring system	direct
Positioning in X, Y, Z axes	0.01 mm
Repeatability in X, Y, Z axes	0.006 mm
Positioning in B axe	5.4 arc.sec
Positioning in C axe	5 arc.sec

Work Table

Table size	φ 1 800 mm
Max. table load	5 000 kg
Max. dimensions of workpiece-length of tool 300 mm	φ 1 800 x 350 mm
Max. dimensions of workpiece with extended side walls	φ 1 800 x 550 mm

Pneumatic Unit

Air pressure at inlet	0.6 - 0.8 MPa
Air consumption (approximately)	6 m ³ /hod
Operational pressure	0.55 MPa

Weights

Machine without tool magazine and electric cabinet	32 400 kg
Electric cabinet	800 kg
Steelbelt chip conveyors (2 x 250)	500 kg
Spindle cooling unit (without medium)	95 kg
Console with aggregates (cooling, lubricating...)	120 kg
Tool magazine separate - 40 tool positions	850 kg
Control system panel including support arm	85 kg

Specifications and illustrations maynot always correspond with the machine latest version.

Manufacturer/Sale
 TAJMAC-ZPS, a. s.
 Třída 3. května 1180
 764 87 Zlín, Malenovice
 CZECH REPUBLIC
 Tel.: +420 577 532 072
 Fax: +420 577 533 626
 www.tajmac-zps.cz
 e-mail:info@tajmac-zps.cz

Holding
 TAJMAC-MTM, S. p. A.
 Via Gran Sasso 15
 20092 Cinisello Balsamo (Mi)
 ITALY
 Tel.: + 39 02 66017878
 Fax: + 39 02 66011457
 www.tajmac-mtm.it
 e-mail:tajmac@tajmac-mtm.it